



**Fiscal Year Ended
December 31, 2010**

**Fiscal Year Ended
December 31, 2009**

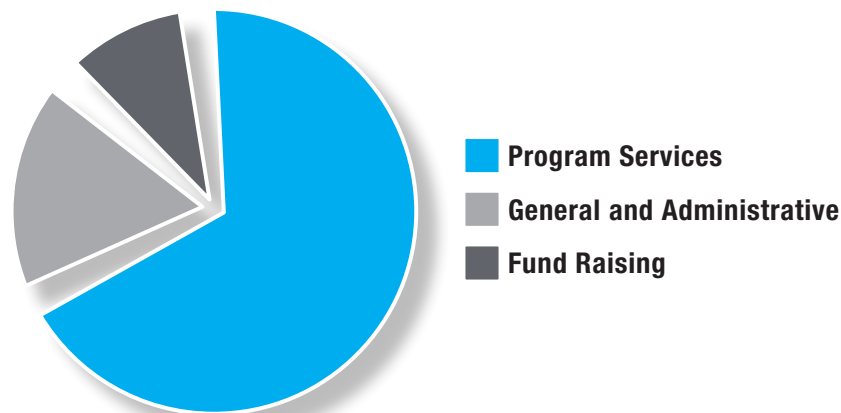
SUPPORT

Contribution and Special Events (less direct cost of Special Events)	\$3,703,065	\$3,698,055
Restricted Funds	—	\$ 300,000
Membership Dues	\$ 52,425	\$ 54,700
Earned Income	\$ 8,721	\$ 6,071
Investment Income	\$ 10,313	\$ 2,726
Total Support:	\$3,774,524	\$4,061,552

EXPENSES

Program Services	\$3,580,856	\$2,797,740
General and Administrative	\$ 941,144	\$ 180,604
Fund Raising	\$ 527,123	\$ 324,450
Total Expenses:	\$5,049,123	\$3,302,794

Increase/(Decrease) in Net Assets	(\$1,274,599)	\$ 758,758
Net Assets Beginning of Year (as restated)	\$2,032,537	\$1,301,775
Restatement of Net Assets	—	(\$ 27,996)
Net Assets at End of Year (as restated)	\$ 757,938	\$2,032,537



In 2010, AFA expended 71 percent of expenses on program services.